

Run the 'Maine

Sunday 4th October 09

5km Route Map

Start Camp Reserve
(northern end)

Head out gates at
northern end along
Gingell Street

Left at Walker Street

Right at Richards Road

Right at Muckelford-
Castlemaine Rd

Just pass the bridge Right
into Botanical Gardens

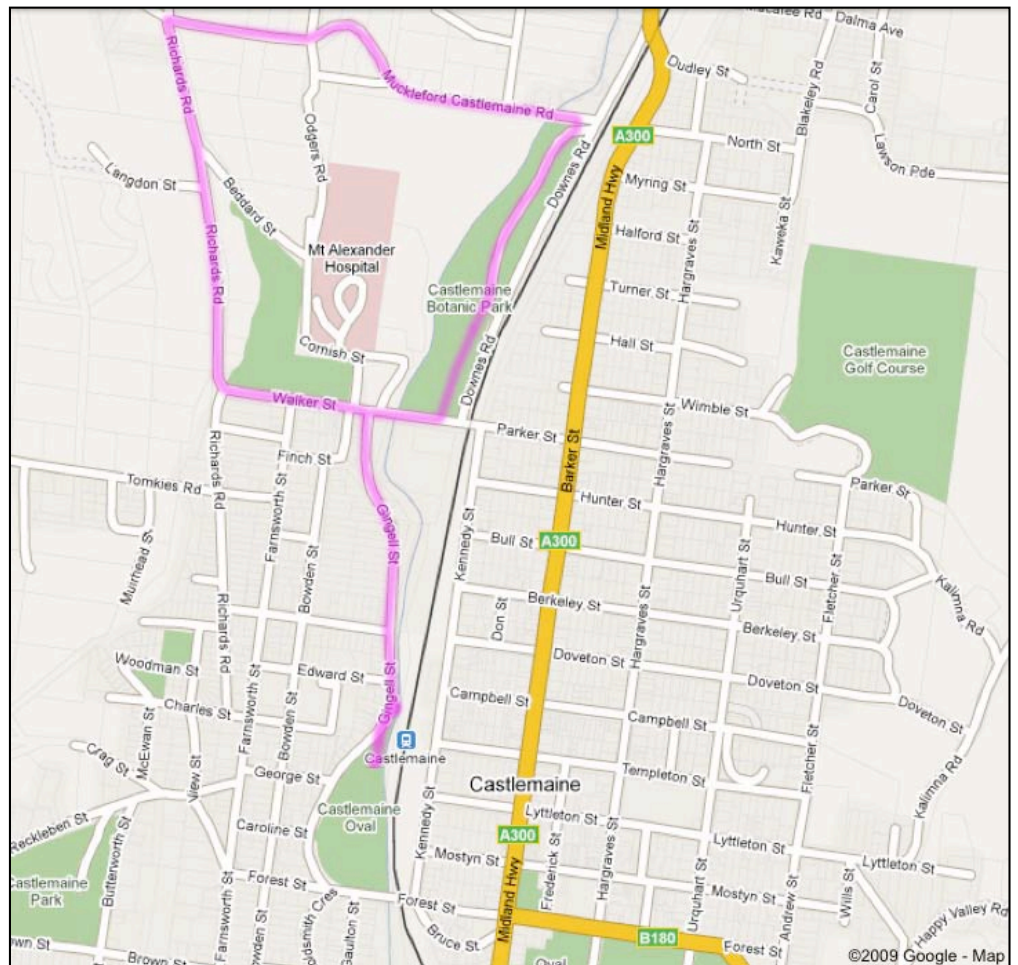
Follow track through
Gardens

Out gates at Walker Street

Along Walker Street

Left at Gingell rd

Finish Camp Reserve



*Route will have Marshals to indicate directions.